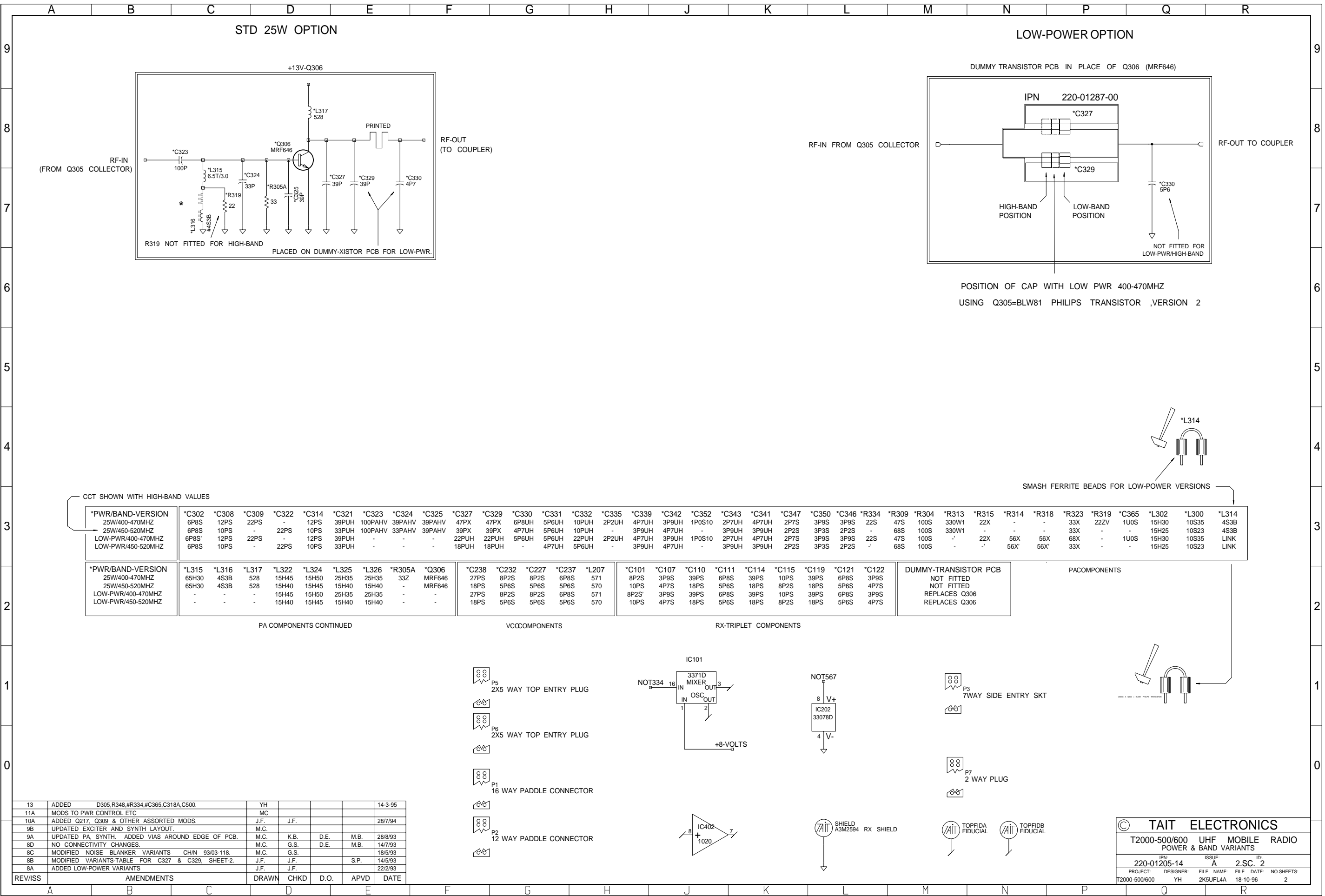


REV/ISS	AMENDMENTS	DRAWN	CHKD	D.O.	APVD	DATE
14	EMC MOD BY DECOUPLING P3 WITH 1N0 CAPS	YH				11/1/95
13	ADDED D205, R408, R409, IC365, C319A, C300.	YH				14-3-95
11A	MODS TO PWR CONTROL ETC.	M.C.				10/8/94
10A	ADDED Q217, Q309 & OTHER ASSORTED MODS.	J.F.				10/8/94
9B	UPDATED EXCITER AND SYNTH LAYOUT.	M.C.				28/8/93
9A	UPDATED PA SYNTH. ADDED VIAS AROUND EDGE OF PCB.	M.C.	K.B.	D.E.	M.B.	14/7/93
8D	NO CONNECTIVITY CHANGES.	M.C.	G.S.	D.E.	M.B.	18/5/93
8C	MODIFIED NOISE BLANKER VARIANTS CHN 3303-118.	M.C.	G.S.			14/5/93
8B	MODIFIED VARIANTS TABLE FOR Q307 & Q309. SHEET 2.	J.F.			S.P.	22/2/93
8A	ADDED LOW-POWER VARIANTS	J.F.				22/2/93

© TAIT ELECTRONICS  
T2000-500/600 UHF MOBILE RADIO  
IPN 220-01205-14  
PROJECT DESIGNER FILE NAME FILE DATE NO SHEETS  
T2000-500/600 YH 2K5UFL4A 18-10-96 2



REV/ISS	AMENDMENTS	DRAWN	CHKD	D.O.	APVD	DATE
13	ADDED D305,R348,#R334,#C365,C318A,C500.	YH				14-3-95
11A	MODS TO PWR CONTROL ETC	MC				
10A	ADDED Q217, Q309 & OTHER ASSORTED MODS.	J.F.	J.F.			28/7/94
9B	UPDATED EXCITER AND SYNTH LAYOUT.	M.C.				
9A	UPDATED PA, SYNTH. ADDED VIAS AROUND EDGE OF PCB.	M.C.	K.B.	D.E.	M.B.	28/8/93
8D	NO CONNECTIVITY CHANGES.	M.C.	G.S.	D.E.	M.B.	14/7/93
8C	MODIFIED NOISE BLANKER VARIANTS CH/N 93/03-118.	M.C.	G.S.			18/5/93
8B	MODIFIED VARIANTS-TABLE FOR C327 & C329, SHEET-2.	J.F.	J.F.		S.P.	14/5/93
8A	ADDED LOW-POWER VARIANTS	J.F.	J.F.			22/2/93

**TAIT ELECTRONICS**  
T2000-500/600 UHF MOBILE RADIO  
POWER & BAND VARIANTS  
IPN: 220-01205-14 ISSUE: A 2.S.C. 2  
PROJECT: T2000-500/600 DESIGNER: YH FILE NAME: 2KSUFL4A DATE: 18-10-96 NO.SHEETS: 2